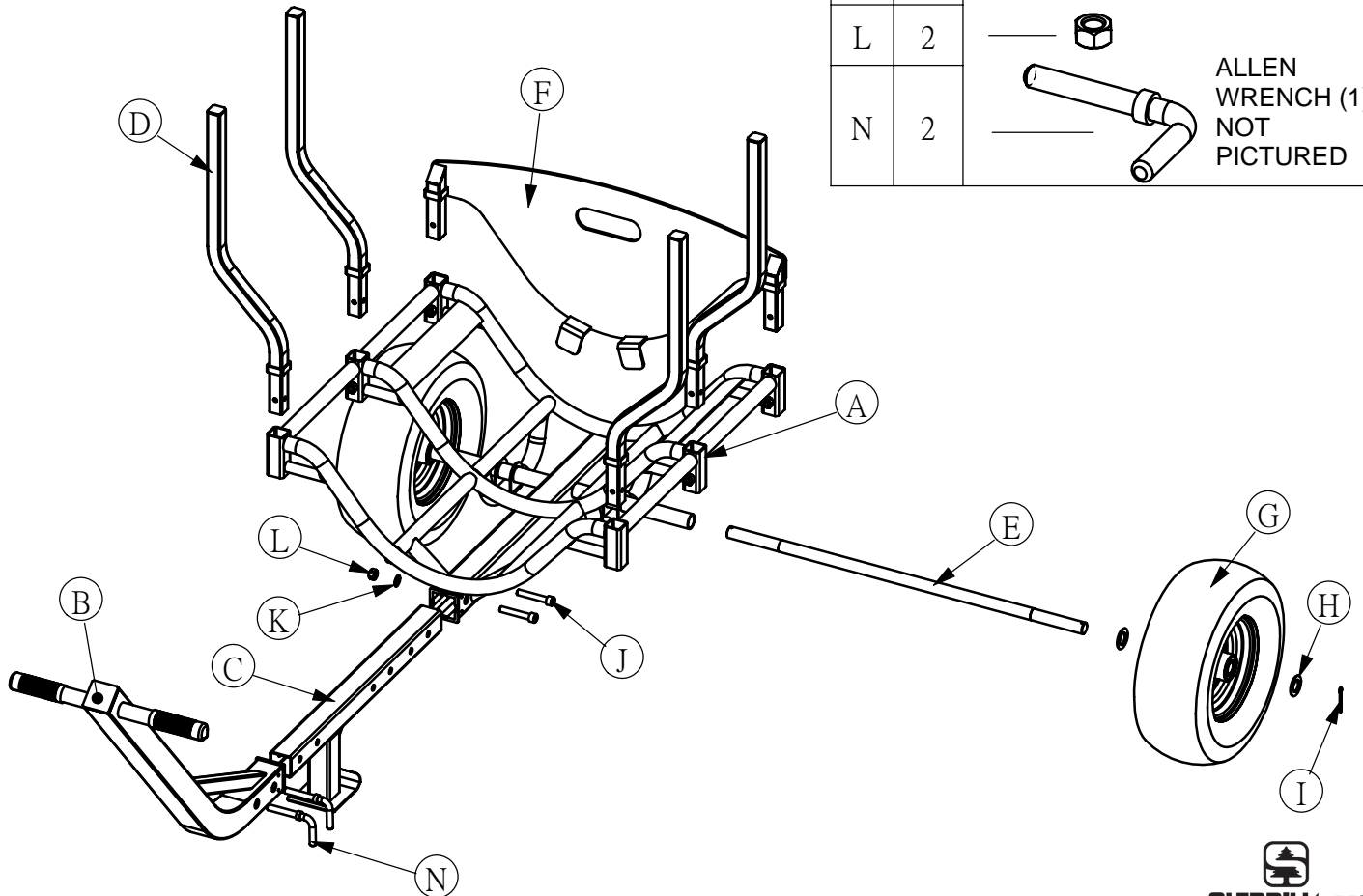
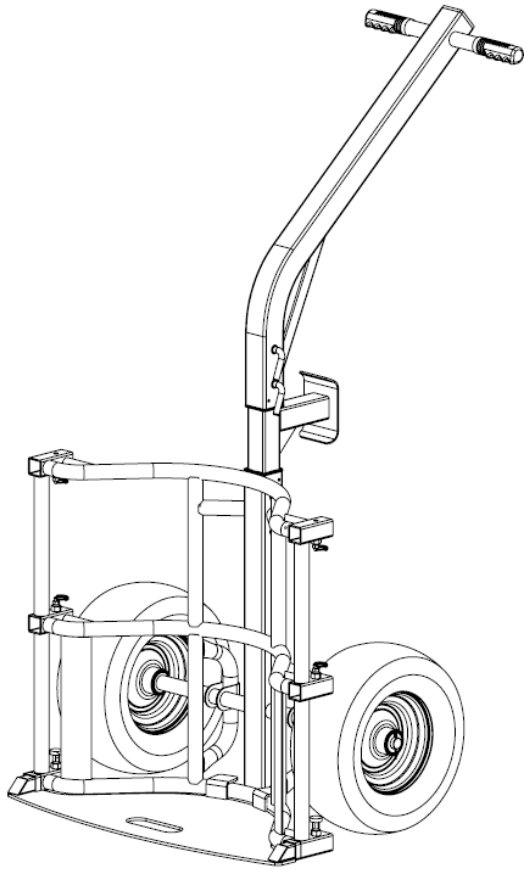


ASSEMBLY INSTRUCTIONS

ARBOR TROLLEY : 36692



		PART LIST	
REF	QTY	DESCRIPTION	
A	1		
B	1		
C	1		
D	4		
E	1		
F	1		
G	2		
H	4		M25
I	2		
J	2		
K	2		
L	2		
N	2		ALLEN WRENCH (1) NOT PICTURED

ASSEMBLY INSTRUCTIONS

ARBOR TROLLEY : 36692

HORIZONTAL TRANSPORTATION

1. UNPACK CONTENTS OF BOX ONTO A FLAT SURFACE
2. LOCATE BOTTOM FRAME (A)
3. INSERT AXLE (E) THROUGH THE BOTTOM FRAME (A)
4. POSITION WASHER (H) ON THE AXLE (E)
5. POSITION WHEEL (G) ON THE AXLE (E)
6. ADD SECOND WASHER (H) TO THE OUTSIDE OF THE WHEEL (G)
7. SECURE COTTER PIN (I) THROUGH THE AXLE END (E)
8. REPEAT PROCESS WITH OPPOSITE SIDE
9. CONNECT MIDDLE FRAME EXTENSION (C) TO BOTTOM FRAME (A), SECURE FRAMES WITH (2) BOLT (J), (2) WASHER (K), & (2) NUT (L) USING THE PROVIDED WRENCH.

NOTE: FRAME EXTENSION (C) CONTAINS 2 POSITIONS FOR CUSTOM LENGTH, ENSURE THE KICKPLATE IS RESTING ON THE GROUND DURING ASSEMBLY

10. CONNECT TOP HANDLE (B) TO MIDDLE FRAME EXTENSION (C) WITH (2) "L" SHAPED BOLTS (N), HANDLE SHOULD FACE UP
11. INSERT (4) UPRIGHTS (D) INTO BOTTOM FRAME (A) BY PULLING THE SPRING RELEASE PINS LOCATED BELOW THE RECEIVER
12. TIGHTEN & CHECK ALL CONNECTIONS

VERTICAL TRANSPORTATION

1. FOLLOW STEPS 1-9
2. INSERT LIFTPLATE (F) INTO BOTTOM FRAME (A) BY PULLING THE SPRING RELEASE PINS LOCATED BELOW THE RECEIVER, PINS CAN BE LOCKED IN THE OPEN POSITION BY TURNING THE DIAL
3. RE-ENGAGE SPRING PINS TO FULLY LOCK THE LIFTPLATE
4. POSITION TROLLEY IN VERTICAL POSITION WITH LIFTPLATE RESTING ON THE GROUND
5. CONNECT TOP HANDLE (B) TO MIDDLE FRAME EXTENSION (C) WITH (2) "L" SHAPED BOLTS (N), HANDLE SHOULD BE FACING TOWARDS THE OPERATOR
6. TIGHTEN & CHECK ALL CONNECTIONS

CONVERTING HORIZONTAL TO VERTICAL TRANSPORTATION

1. REMOVE UPRIGHTS (D) FROM BOTTOM FRAME (A)
2. INSERT LIFTPLATE (F) INTO BOTTOM FRAME (A)
3. RELEASE AND ROTATE TOP HANDLE (B), ENSURE THE HANDLE IS FACING TOWARDS THE OPERATOR

CONVERTING VERTICAL TO HORIZONTAL TRANSPORTATION

1. RELEASE AND ROTATE TOP HANDLE (B), ENSURE THE HANDLE IS FACING UP
2. REMOVE LIFTPLATE (F) FROM BOTTOM FRAME (A)
3. INSERT UPRIGHTS (D) INTO BOTTOM FRAME (A)